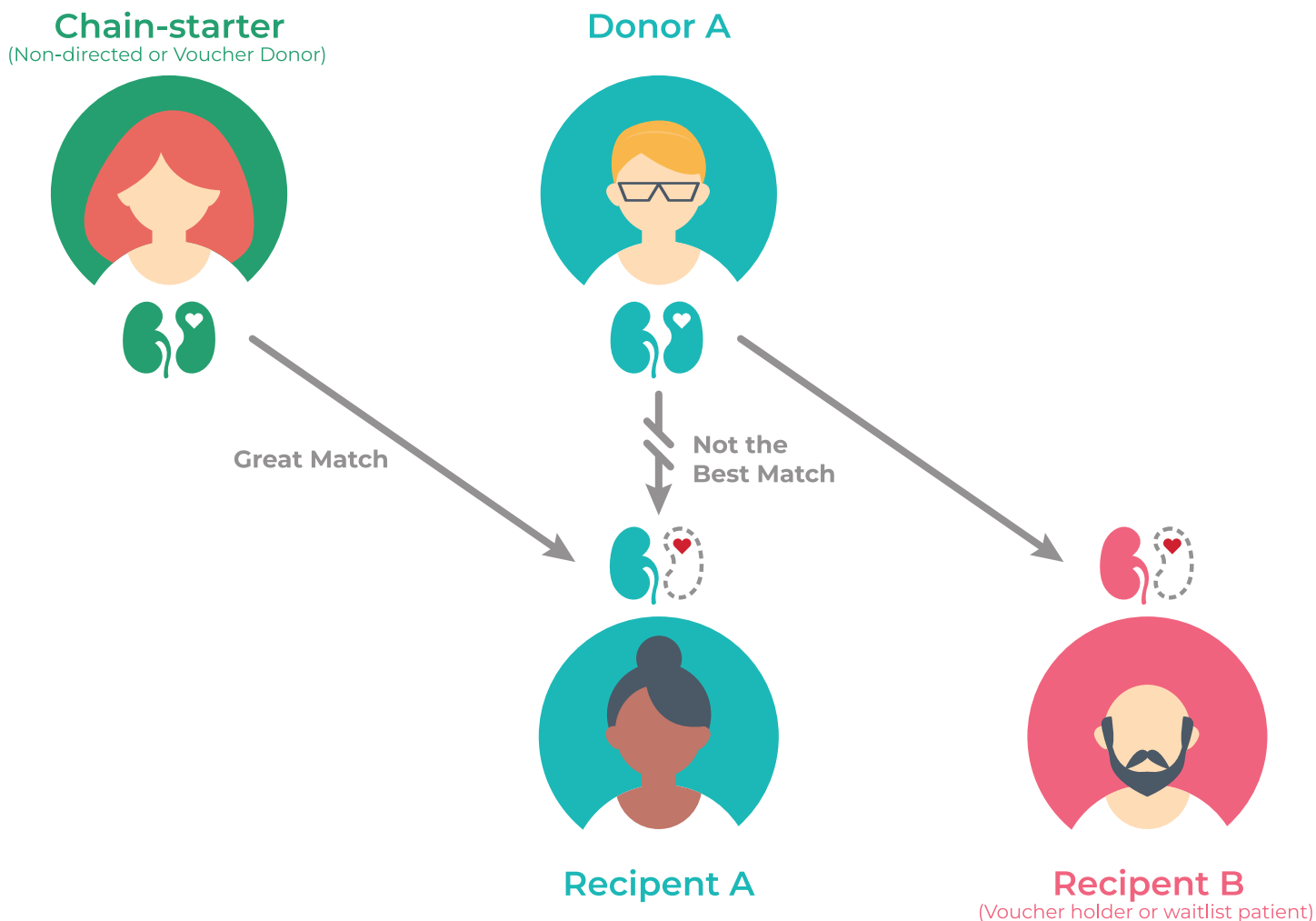


What is a Kidney Donation Chain?

A kidney donation chain is a way to facilitate living donor kidney transplants for the maximum number of people.



A kidney chain is made up of donor-recipient pairs. Each pair consists of:

1. A kidney patient in need of a transplant.
2. A donor willing to donate a kidney on their behalf, but whose kidney is not a perfect match or incompatible.

The chain-starter, usually an altruistic or Good Samaritan donor who wants to donate their kidney to a stranger, donates their kidney to set the chain in motion.

Using the latest in DNA technology, the National Kidney Registry finds **Recipient A** who is the best match for the chain-starter's kidney and safely transports the chain-starter's kidney to **Recipient A's** transplant center for transplantation.

Next, **Donor A**, the donor who wanted to donate their kidney on behalf of **Recipient A**, donates their kidney, and again, the NKR finds the best matched recipient for that kidney, **Recipient B**.

