



NATIONAL KIDNEY REGISTRY[®]
FACILITATING LIVING DONOR TRANSPLANTS

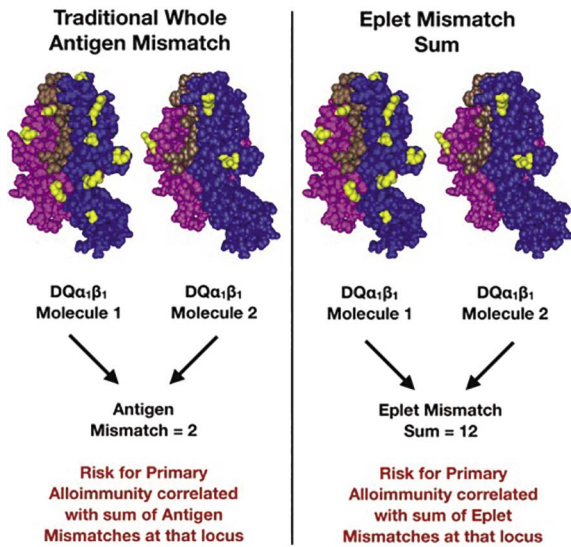


BETTER MATCHES
BETTER OUTCOMES

www.kidneyregistry.org

Precise Technology to Find You the Best Match

Traditionally, transplant matches were measured by an HLA match score from 0-6 (6 being the best). HLA scores are generally based on A, B and DR antigens. An antigen mismatch is where rejection often starts.

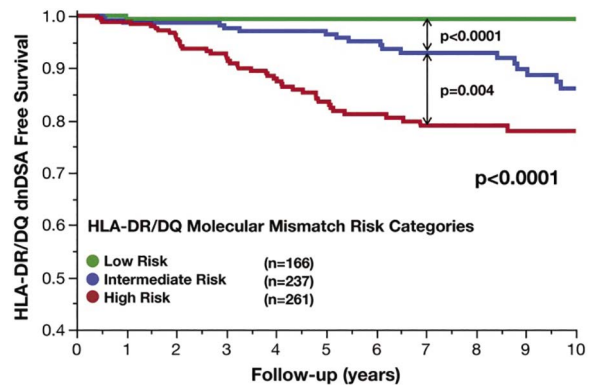


Wiebe C, Kosmoliaptsis V, Pochinco D, et al. HLA-DR/DQ molecular mismatch: A prognostic biomarker for primary alloimmunity. *Am J Transplant.* 2019;19:1708–1719.

Behind antigens are eplets, which are essential components of HLA epitopes recognized by antibodies. Eplet mismatch analysis has been proven to be a more precise measure of a donor-recipient match compared to antigen matching.

By minimizing eplet mismatches and understanding the match they receive, a recipient can potentially:

- reduce the risk of de novo DSA formation
- lower the probability of rejection
- lower the probability of graft failure
- lower their immune-suppression dosage



Wiebe C, Kosmoliaptsis V, Pochinco D, et al. HLA-DR/DQ molecular mismatch: A prognostic biomarker for primary alloimmunity. *Am J Transplant.* 2019;19:1708–1719.

The lower the eplet mismatch, the higher the probability the transplanted kidney will last a lifetime.

Past the HLA Mark Down to the Eplet Level



Donor Advantages

Individuals who donate through the NKR at an NKR Member Center (including voucher and paired exchange donations) or through a Donor Shield Direct transplant center qualify for the following support and protections offered by Donor Shield.

Lost wage reimbursement for wages lost due to time off for kidney donation.

Reimbursement for travel and lodging expenses incurred as a result of the donation.

Rembursement for dependent care costs for children or dependent adults of the donor.

Kidney prioritization to give donors priority for a living donor kidney if they ever need a transplant.

The Voucher Program, which lets donors donate when it is convenient for them and give a voucher to a friend or family member for an immediate or future transplant.

Remote donation to enable donors to use a transplant center close to home, avoiding air travel for donor evaluation and surgery.

Donor Connect, which gives potential donors the opportunity to speak with a living kidney donor.

The latest kidney-matching technology to ensure the donor's kidney goes to the best-matched recipient.

Legal support to help donors fight donation-related termination and discrimination.

Complication protection including reimbursement for lost wages and travel expenses due to donation-related complications.

Streamlined process that makes the donation experience easy and reduces wasted time.

Home blood draws so donors do not have to travel to the transplant center.

BETTER Technology + BETTER Matches = Better Outcomes & Less Immunosuppression



Recipient Advantages

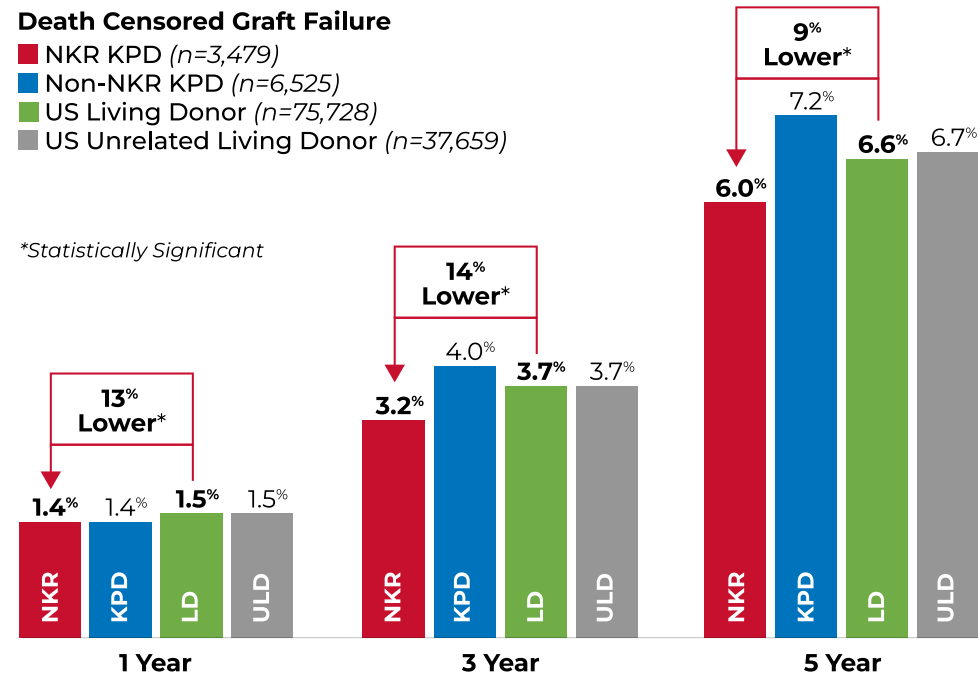
1. We can help you find a better-matched living donor kidney.
2. Statistically significant lower death-censored graft failure rates at 3, 5 and 7 years post-transplant.
3. Donor Shield removes barriers to donation, making it easier to find a living donor.
4. Standard Voucher Program allows donors to donate quickly, when it is convenient for their schedule.
5. Microsite Program – a free website to help patients find a living donor.
6. Donor search experts assist patients in their search for a donor.
7. Shorter wait time – 80% are transplanted within 90 days of activation in the NKR system.
8. Consistently match and transplant highly sensitized patients with up to 99% cPRA.

Death-Censored Graft Failure Rates

Death Censored Graft Failure

- NKR KPD (n=3,479)
- Non-NKR KPD (n=6,525)
- US Living Donor (n=75,728)
- US Unrelated Living Donor (n=37,659)

*Statistically Significant



Provided courtesy of NYU Grossman School of Medicine, Department of Surgery
Not including waitlist patients; Kaplan-Meier GS Rates for Transplants Performed: 02/2008-12/2021 with follow-up through 3/31/2022
<https://www.srtr.org/SRTR data as of June 2022>

State-of-the-Art Technology Achieving Longer Kidney Life Years



WHO WE ARE: The National Kidney Registry is the world's largest paired exchange organization, facilitating more living donor kidney transplants than any other organization in the world, and is the leading provider of comprehensive protections for living donors.

HOW IT WORKS: In a paired exchange chain, a donor will donate their kidney to another recipient in exchange for a compatible, or better matched, kidney for their loved one with a voucher donor as the catalyst.

